

# WebTech Wireless Offers Wireless GPS Fleet Tracking and Location Services Using Microsoft MapPoint Technology

## Microsoft MapPoint Alliance Study

December 2001

---

*Trucking, courier, security, utility, construction, taxi, and field service companies all have one thing in common: they need to manage their mobile workforce and vehicle assets. Using a combination of wireless network, global positioning satellite (GPS), Internet, and Microsoft® MapPoint® technologies, the WebTech Wireless solution—Quadrant Vehicle Services System—enables any company to wirelessly track and communicate with its mobile workforce and assets, and provide remote safety services (also known as telematics), such as door lock/unlock, panic alert, and engine immobilization services. With one of the most popular Quadrant System services—GPS Fleet Tracking—dispatchers can view and monitor real-time vehicle activity using Microsoft MapPoint technology.*

---

### Partner Profile

WebTech Wireless was founded in 2000 by two pioneers in wireless technology, Anwar Sukkarie (WebTech Wireless President and CEO) and Cameron Fraser (WebTech Wireless CTO) who envisioned wireless services would become an integral part of life on the road. They began developing the Web-based Quadrant Vehicle Services System to deliver wireless location, communication, and telematics services. WebTech Wireless chose Microsoft MapPoint technology to enhance their location service suite with maps that redraw quickly and are a fraction of the cost of other mapping systems. The Microsoft MapPoint ActiveX® control also allows WebTech Wireless to seamlessly integrate Microsoft MapPoint technology into their Web-based system. The end result is a system with bullet-proof client-side installation across a variety of desktop environments and a robust map database that supports all of the WebTech Wireless location services.

### Challenge

Traditionally, mobile workers communicate and report their location to dispatchers using radio dispatch systems. They memorize city layouts or look up addresses on printed, fold-out maps to make deliveries as quickly as possible. However, no one can memorize all of the street locations in a large city, not to mention printed maps are often out-of-date. The complications of rush hour traffic also jeopardize the safety of mobile workers as their attention is divided between watching the road and reading a map. Add vehicle problems or failure to the mix, and businesses risk losing customers due to late or incomplete deliveries or work delays. Companies require a cost-effective solution to these mobile workforce problems and efficient ways to manage their vehicle assets. Ideally, the solution would be Web-based and meet both driver and dispatcher needs, and wouldn't involve complicated installation and support issues.

## WebTech Wireless

### Contact Information

WebTech Wireless  
Suite 215  
4299 Canada Way  
Burnaby, B. C.  
Canada V5G 1H3  
[www.webtechwireless.com](http://www.webtechwireless.com)  
[info@webtechwireless.com](mailto:info@webtechwireless.com)

### Profile

WebTech Wireless has offices in North America, Europe, and the Middle East, and provides wireless vehicle services to a wide range of companies worldwide.

### Target Audience

Any company with a mobile workforce and vehicle fleet that wants to wirelessly track and communicate with them, and provide telematics services, using an end-to-end, Web-based solution

### Software Service

- Quadrant Vehicle Services System

### Microsoft Technologies

- Microsoft® MapPoint® 2002
- Microsoft Visual Basic® 6.0

### Developer Satisfaction

"MapPoint allows us to provide high-quality maps, virtual instant map redraw, and a desktop enhancement to our Internet portal that leverages the popular Microsoft work environment."

--Cameron Fraser  
Co-founder  
Chief Technology Officer  
WebTech Wireless

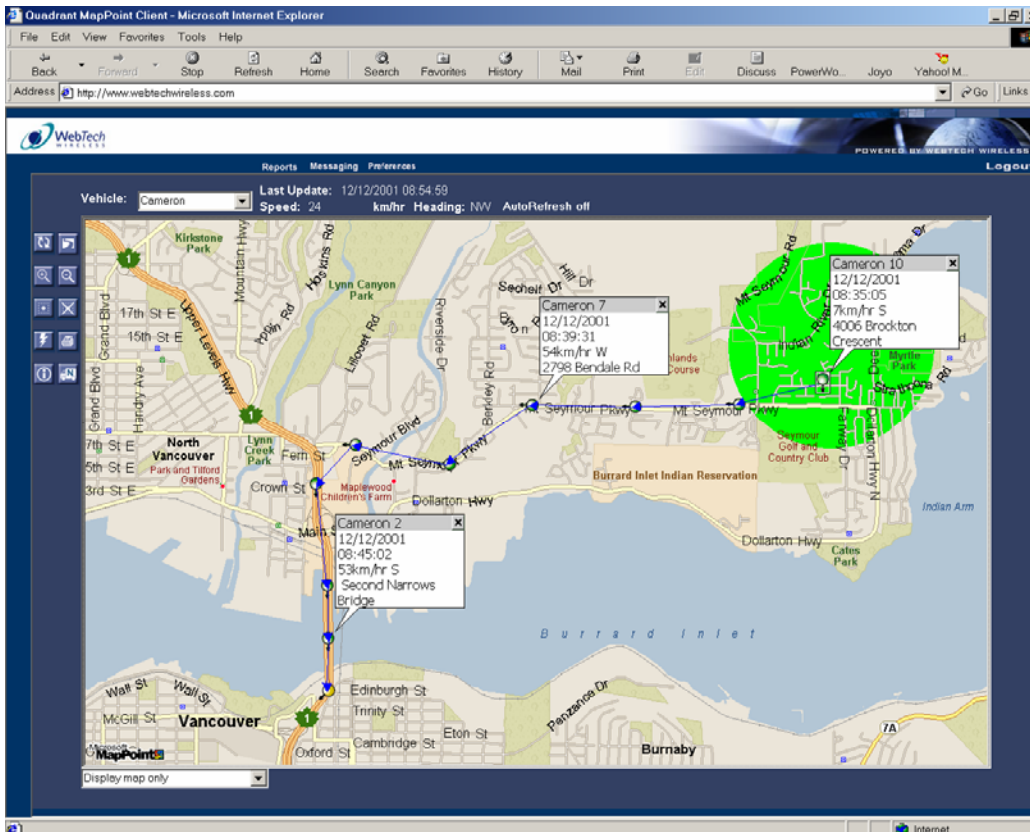
## Solution

The WebTech Wireless Web-based solution—Quadrant Vehicle Services System—solves these mobile workforce and asset management problems by combining wireless network, GPS, and Internet technologies to provide communication, location, and telematics services. The Quadrant System incorporates Microsoft MapPoint technology to enhance its suite of tracking and location services, which includes GPS Fleet Tracking. Using Microsoft MapPoint technology, the tracking and location services convert real-time vehicle latitudes and longitudes to street addresses on a map. Dispatchers utilize these maps to track their mobile workforce and vehicle assets 24 hours a day, 7 days a week. They can use them to monitor the mobile workforce and vehicle asset activity within defined zones, and provide customers with accurate arrival and departure times. Mobile workers can use these maps on personal digital assistants (PDA) to navigate instead of using awkward out-of-date, printed maps. Dispatchers and mobile workers can both use the system to communicate using PDAs rather than using costly dispatch or cellular systems. The Quadrant System provides all of these services and many other mission-critical location and telematics services that improve the efficiency and reduce the cost of mobile workforce operations. And, it's easy to install and support.

## Customer Satisfaction

"One of the key strengths of WebTech's GPS Fleet Tracking service is its use of MapPoint. Of all fleet management solutions we evaluated, WebTech's use of MapPoint in their fleet services portal proved to be the most accurate and comprehensive, not to mention the most visually attractive. Also, because the maps are stored locally on the PC, map refreshes are very quick compared to the downloaded maps over the Internet."

--Joe Suehle  
Director of Materials Distribution  
Baltimore Gas & Electric



The WebTech Wireless GPS Fleet Tracking service incorporates Microsoft MapPoint technology so you can efficiently view and monitor your mobile workforce and vehicle asset activity.

## Additional Information

For information on Microsoft MapPoint, visit [www.microsoft.com/office/mappoint/](http://www.microsoft.com/office/mappoint/). For information on working with the MapPoint ActiveX control and object model, visit [msdn.microsoft.com/mappoint/](http://msdn.microsoft.com/mappoint/).

© 2001 Microsoft Corporation. All rights reserved.  
This document is for informational purposes only. MICROSOFT MAKES NO WARRANTIES, EXPRESS OR IMPLIED, IN THIS DOCUMENT.



Microsoft, MapPoint, ActiveX, and Visual Basic are either registered trademarks or trademarks of Microsoft Corporation in the United States and/or other countries. The names of actual companies and products mentioned herein may be the trademarks of their respective owners.

Part No. ????